

# GeoRo Full Installation Guide

## Table of Contents

Pages:

1.....

8.....

16.....

22.....

32.....

Contents:

Downloads, Required Software for downloads

Kro, Sakray, and GeoRo Installations

Updating Kro and Sakray

Registration and Control Panel Features

Welcome to GeoRo

# Kro, Sakray, and Prerequisite Software (For Torrent Downloads)

First of all I would like to welcome you to GeoRo. We hope that you like your stay with us and do not hesitate to ask about anything on our forums, in game, or through the in-game mail or by email [georo.team'at'gmail.com].

So, the first step is to get the Kro and Sakray install files. We have found two methods for this:

HTTP downloads and Bit Torrent downloads.

## HTTP Downloads:

I will start with the HTTP downloads because they are the simplest way of getting what you need:

Highlight these:

KRO: [http://dl.free.fr/getfile.pl?file=/90IvDONa/RAG\\_SETUP0305.exe](http://dl.free.fr/getfile.pl?file=/90IvDONa/RAG_SETUP0305.exe)

Sakray: [http://dl.free.fr/getfile.pl?file=/eu49ggQN/SAK\\_SETUP0305.exe](http://dl.free.fr/getfile.pl?file=/eu49ggQN/SAK_SETUP0305.exe)

Then click on the links to open up the web page for each one.

Please follow the circled links on these screenshots, click the link circled in red:



# Torrent Downloads:

Downloading Kro and Sakray with torrents is slightly more complicated.

First we need to download and install a bit torrent program (in this guide we're using Azureus but there are lots to choose from). Since we are using Azureus we will also need to install Java.

So, first stop is here: <http://azureus.sourceforge.net/download.php>



**1:**

Click on the Java logo and it will take you to this page:



Click on Free Java Download and then follow the onscreen instructions.

Once that is done and installed process to section 2.

2:

Now that Java Version 6 Edition 5 is installed, click on the windows logo in area #2. This will start the Azureus Download. Once it is finished install it.

Once that is done go to this link: <http://sakuraheaven.com/mirrors/>

You will see this page; click the links circled in red and save them to your desktop:

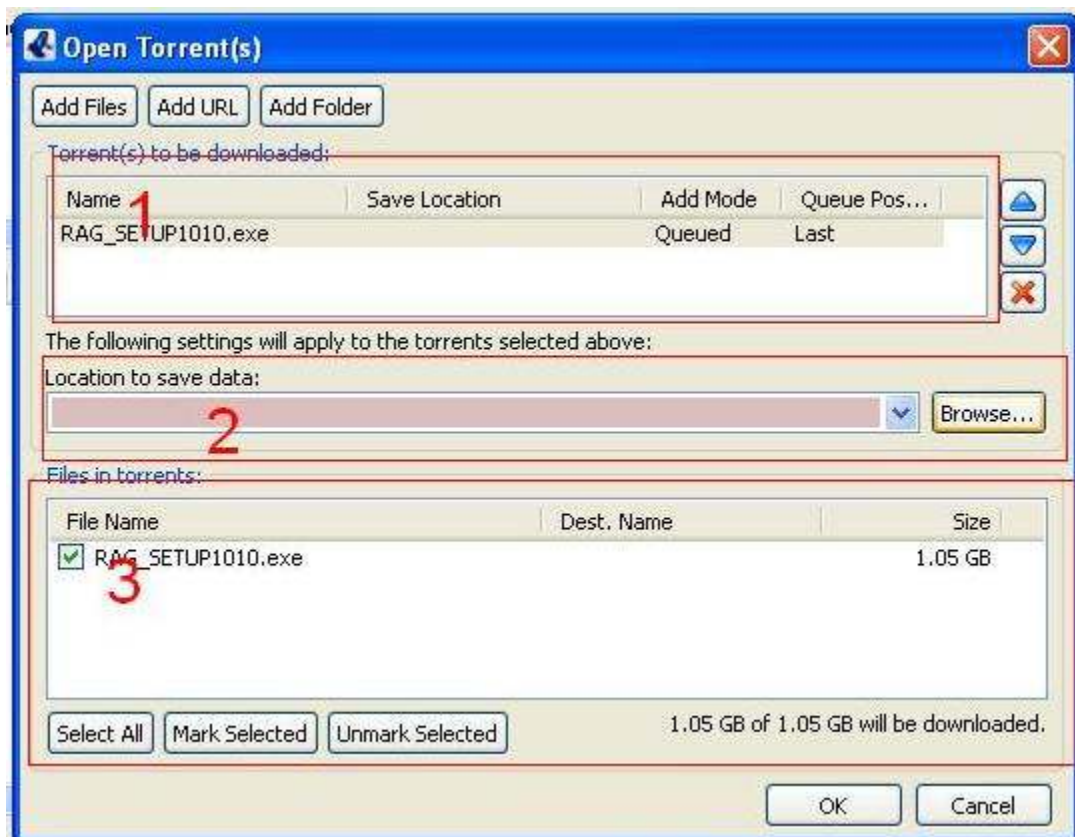
## Clients & Patches

RSS

Date	Filename	Size	Seeds	Clients	Speed	DL	Xfer'd
2006-10-18 07:46	<a href="#">SAK_SETUP1010.exe</a>	914.99 MiB	28	20	24.41 MiB/s	299,490	99.05 TiB
2006-10-18 07:46	<a href="#">RAG_SETUP1010.exe</a>	1.06 GiB	43	23	945.26 KiB/s	278,096	198.52 TiB
2006-07-18 13:00	<a href="#">RAG_SETUP0711.exe</a>	1.06 GiB	11	11	82.78 KiB/s	158,047	136.40 TiB

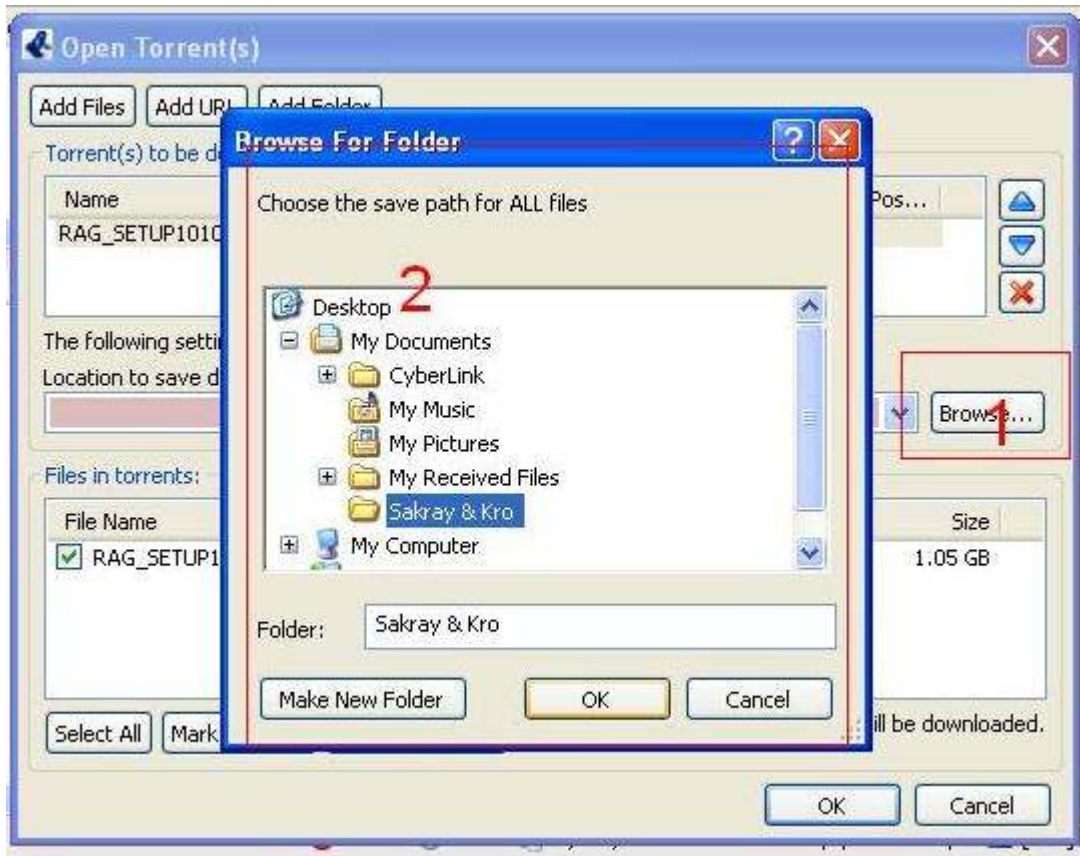
Once downloaded locate them on your desktop, highlight both of them and press enter.

This will open up this window and it will have both KRO and Sakray listed in it:



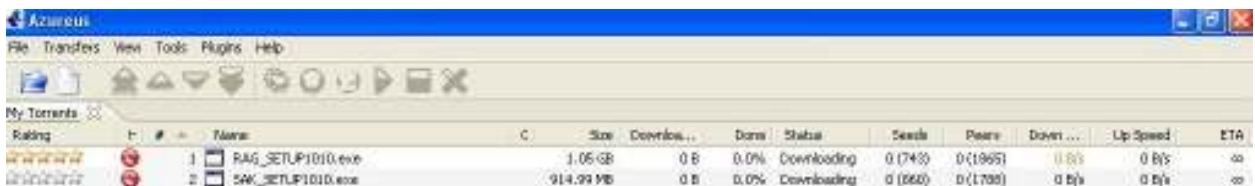
1. File that will be downloaded to your computer
2. Location Azureus will save the files to
3. What files are listed in the torrent(s) that were opened

Next click on 'Browse' if there is not a file path in box #2:



Then browse to the folder you want to download the files to. Note that you can make a new folder by clicking the "Make New Folder" button. Once the folder is selected press 'OK'.

Now you will see this window:



Please note that ETA is how long your download till take to finish. Time and speed is dependent on Seeders, the more seeds the faster it will download usually.

Once the files are finished downloading they will be in the folder you specified earlier.

Now it is time to download GeoRo.

There are three ways to download our installer:

From our website: <http://www.freewebs.com/georagnarokonline>

**Useful Links:**

Kro & Sakray download links:  
<http://www.sakuraheaven.com/mirrors>

Having patching problems with the official updaters? (aka cant download file errors or crashes on files) Then go to the relevent link and download the file from Gravity:

KRO: <ftp://ragnarok.nefficient.co.kr/pub/ragnarok/Patch/>

Sakray: <ftp://ragnarok.nefficient.co.kr/pub/ragnarok/SakPatch/>

Link to our Client:  
<http://lmproductions.servegame.com:81/georo/fcd/GeoRo%20Installer.rar>

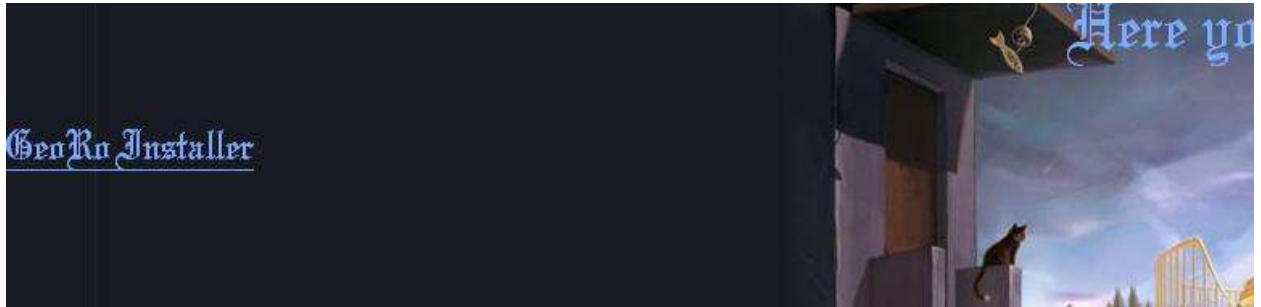
**Website Navigation**

- Client Download
- Server Rates
- Server Rules
- Custom stuff
- Forum(old)
- Forum(new)
- Contact Us
- Donation Page
- Vote For Us
- My Website

From the Forums: <http://z4.invisionfree.com/georo>

Forum	Topics	Replies	Last Post Info
<b>GeoRo Installer</b> You can get the latest installer from here.	-	-	Redirected Hits: 440
<b>Kro and Sakray Downloads</b> Need kro and sakray? Get it from here.	-	-	Redirected Hits: 287
<b>Kro Patches</b> Having an update Problem with Kro? Download the patch your getting errored on from here and put it in your Ro folder then try to repatch.	-	-	Redirected Hits: 164
<b>Sakray Patches</b> Having Problems patching sakray? Go to this link and download the patch your having problems with, put it into your RO folder then try to repatch.	-	-	Redirected Hits: 101
<b>GRF Direct Download</b> Only download this if you can not use Neoncube, but you have installed the latest GeoRo files.	-	-	Redirected Hits: 329
<b>Test Server Installer</b> You can download the latest test server installer here.	-	-	Redirected Hits: 80

And from the Downloads Site: [http://lmproductions.servegame.com:81/georo/GeoRo\\_full\\_clients.htm](http://lmproductions.servegame.com:81/georo/GeoRo_full_clients.htm)



# Kro, Sakray, and GeoRo Installation

Next up is installing everything. **PLEASE FOLLOW THE STEPS IN ORDER AS LISTED HERE!**

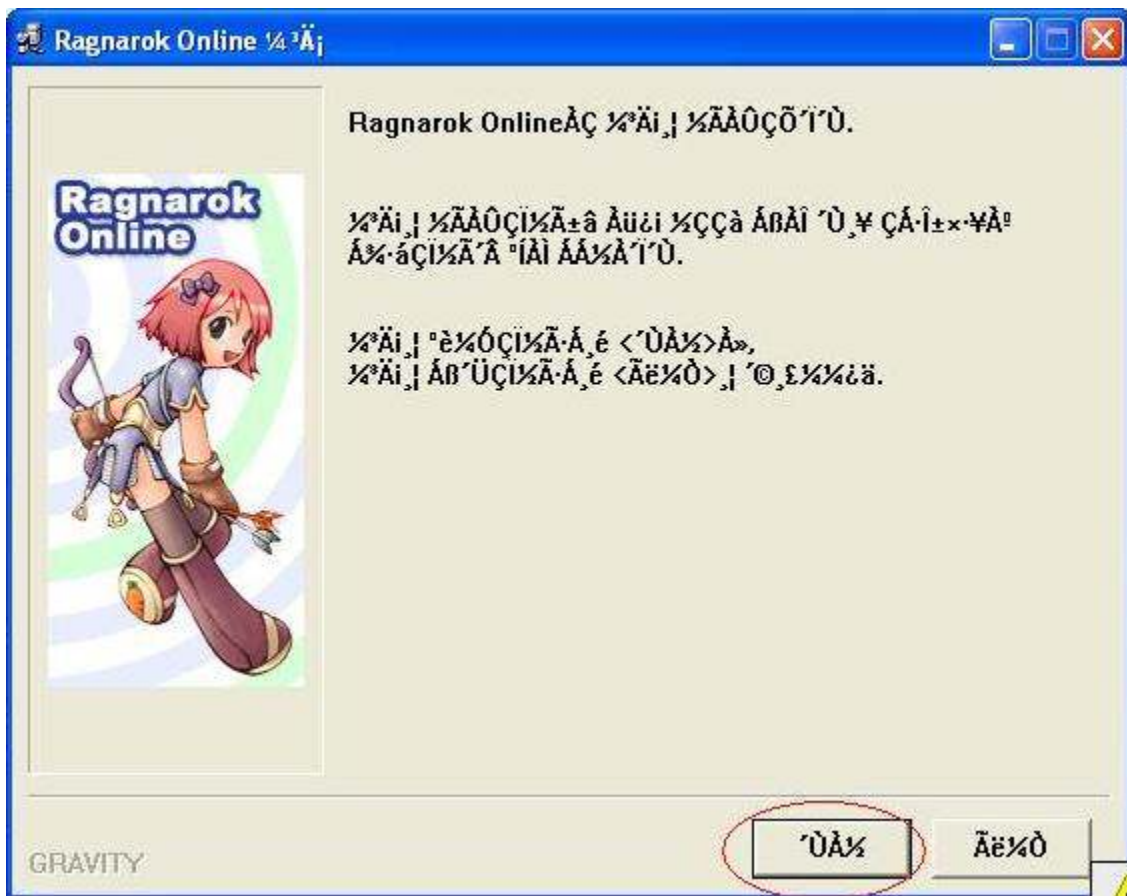
## Step 1:

KRO:

Select the RagXXX.exe (XXX equals a version number or anything that might come after the 'rag' parts of the file name) and press enter.

You will see this screen next:

Click on the red-circled buttons:





¶ó±×³²·íÄ© ÷Ä¶óÄí Äì÷è%ä"ü

Äj 1 Ää ÄÑ Äε

Äj 1 Ä¶ [Äñ Äö]

» %ä"üÄº (ÄÖ)±×¶ó±ñÆ%[ÄÇi i©È,»çi)÷i% -"³B 'x Äj"³Çi'Ä ÄíÄí"Ý ±ä"Ý MMORPGI

Äj 2 Ä¶ [%ä"üÄÇ È÷·Ä 'x "³æ]

1. Äì %ä"üÄº ¶ó±×³²·íÄ© È"ÆäÄíÄö (www.ragnarok.co.kr)÷i% - ÷Ä¶óÄí»óÄ,·í "³ÄÇi,·
2. Äì %ä"ü÷i μ÷ÄÇÇi'Ä "íÄº Ä±±äÄöÄ,·í È"ÆäÄíÄö,·í 'æ"³Çi÷© %ä"üÄÇ "³æ»çÇ×Ä» |
3. È,»ç'Ä ÇÖ @ÄöÄí »çÄ"i 'B»ÝÇÖ "æ÷i "ü·Ä"Ý·É÷i Äs'èμÇÄö %É'Ä 'üÄs %È÷i% -"³Ä
4. Äì÷èÄÜ'Ä "³æμÈ %ä"ü÷i 'èÇØ μ÷ÄÇÇiÄö %ÉÄ» ±Ç,©"i ÄÖÄ,,ç, "³æμÈ %ä"ü÷i |

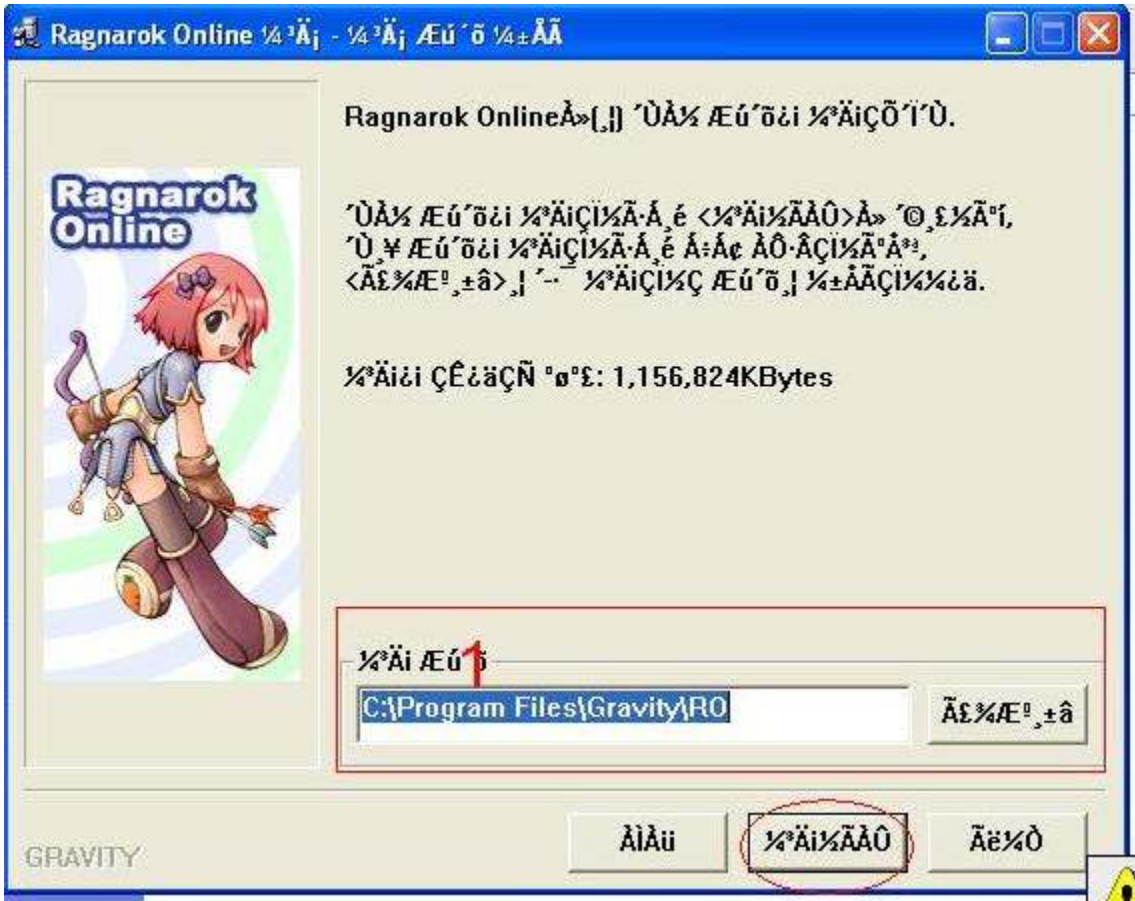
Äj 3 Ä¶ [%ä"ü ÷Ü ÄØÄε]

1. Äì %ä"üÄº È,»ç"i Äj"³Çi'Ä "³³³% -"³ñ%÷i "üÇÑ Äì÷è%È»[ÄÇi % -"³ñ%³³ %È»¶ó ÇÖ'í
2. Äì %ä"ü÷i ,í%ÄμÇÄö %Æ'íÇÑ »çÇ×÷i 'èÇØ% -Ä "ü"è'Ý·É 'x % -"³ñ%³³ %È»ÄÇ ÄèÄí

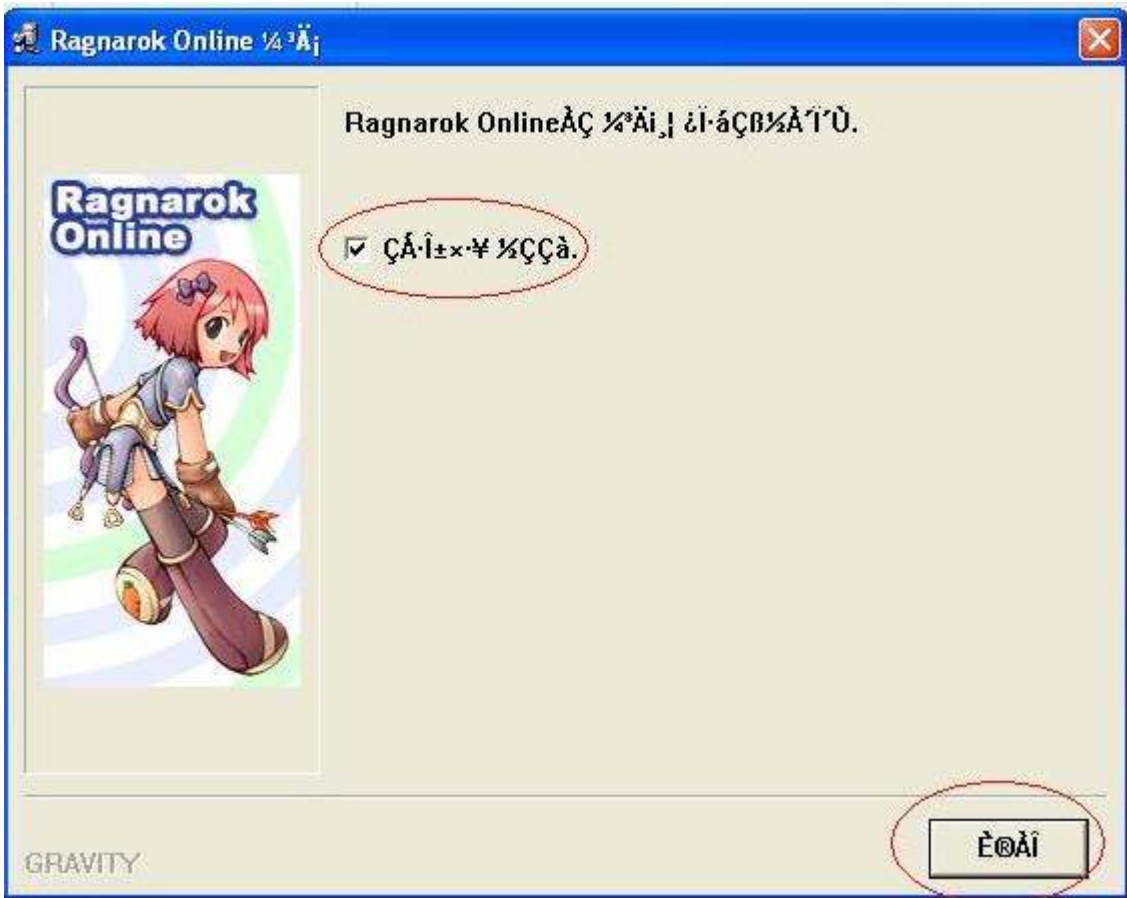
Äj 4 Ä¶ [÷è%ÄÇ Ä±ÄÇ ]

1. ¶ó±×³²·íÄ© ÷Ä¶óÄí [ÄÇi i©¶ó±×³²·íÄ©i] È,»ç÷i% - ÇöÄç ÄíÄí"Ý"ü ,ÖÆ%íμð%í "³È-ÄÄÄÜÄ: %³³ñÄj"³Çi:Ää, PCÄè%ÄÄ» ÄèÇi÷©

μ÷ÄÇÇÖ    2/3    Äè%Ö



1: Do NOT change this unless you are going to put it into another folder. If you do PLEASE WRITE down the path you chose, as you will need to install Sakray and GeoRo to this path



as well!!!  
!

Uncheck the box and press on the button to close the window.

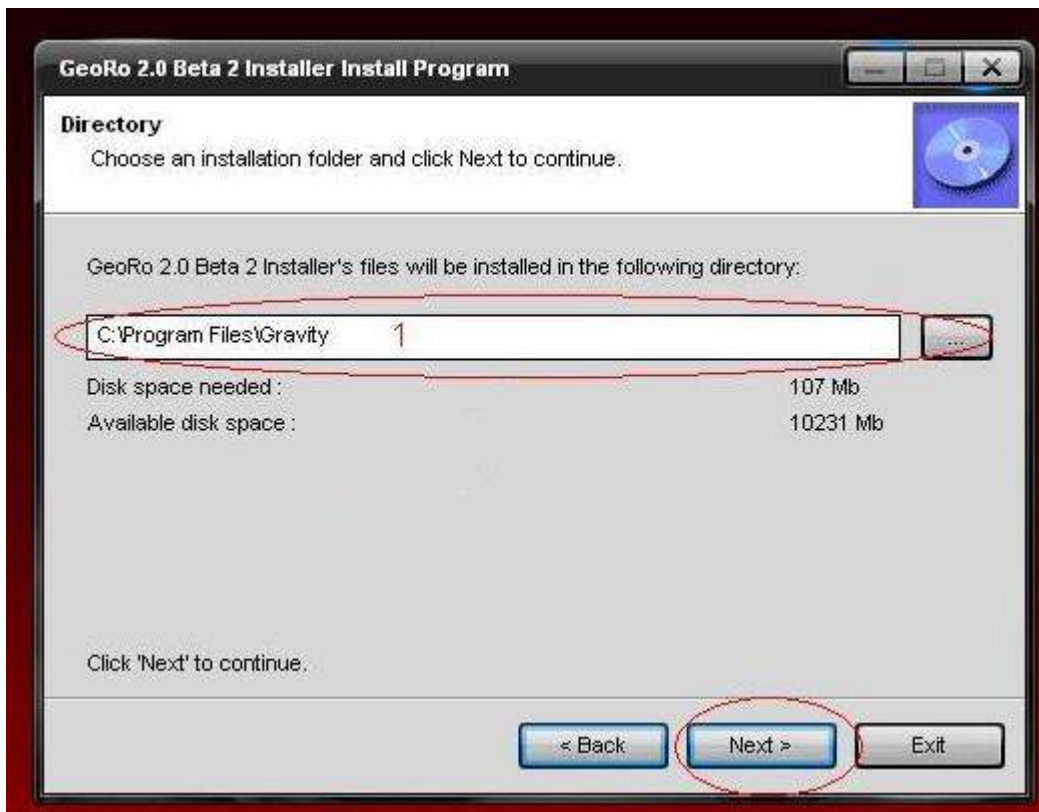
Next follow the same process for Sakray.

After both Kro and Sakray are installed it is time to install GeoRo.

Unrar the installer (you can get WinRar from <http://www.rarlabs.com> its free) then double click it to open it.

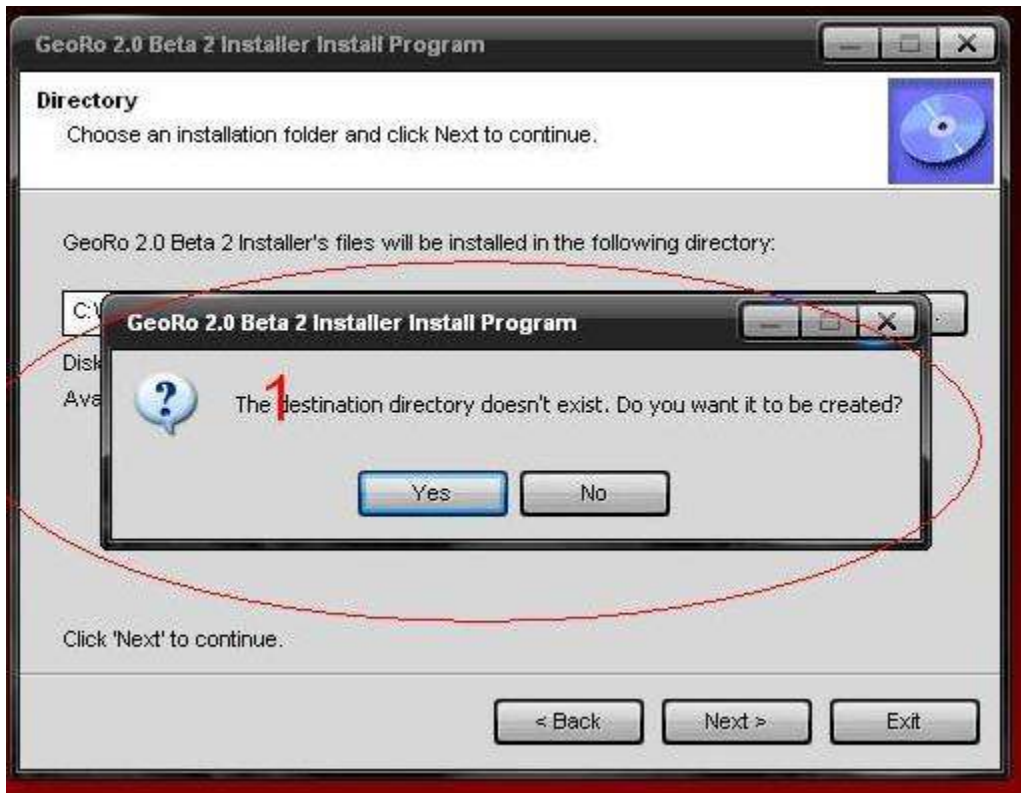
Follow the screen shots:



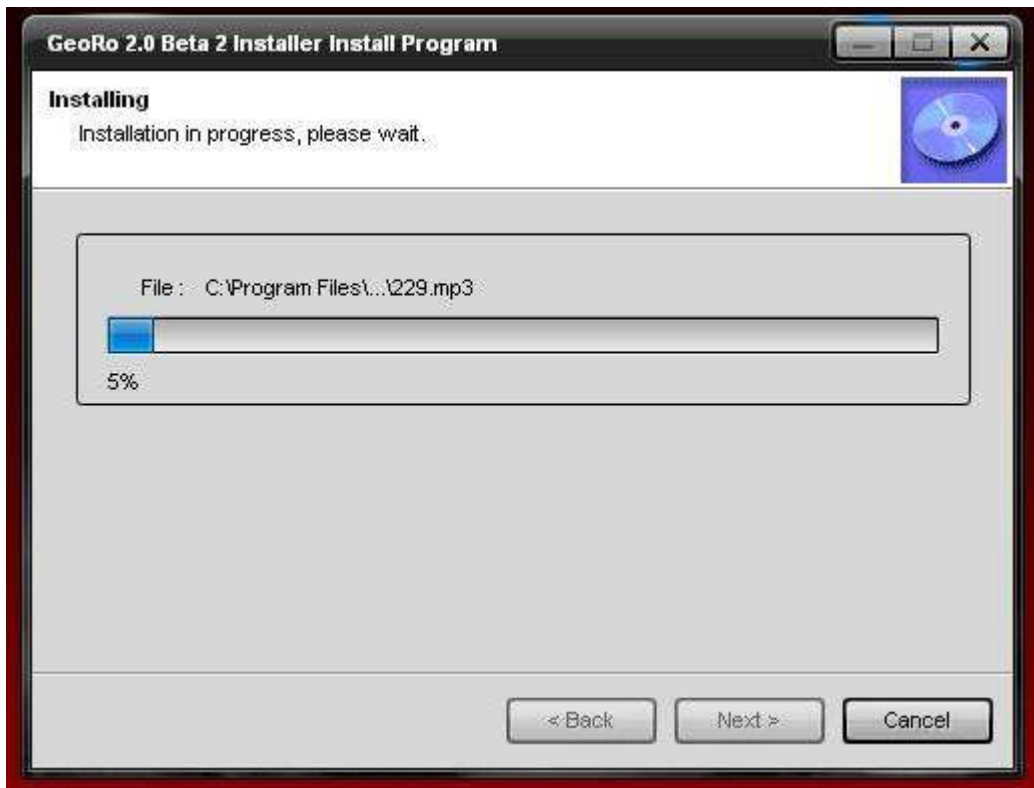
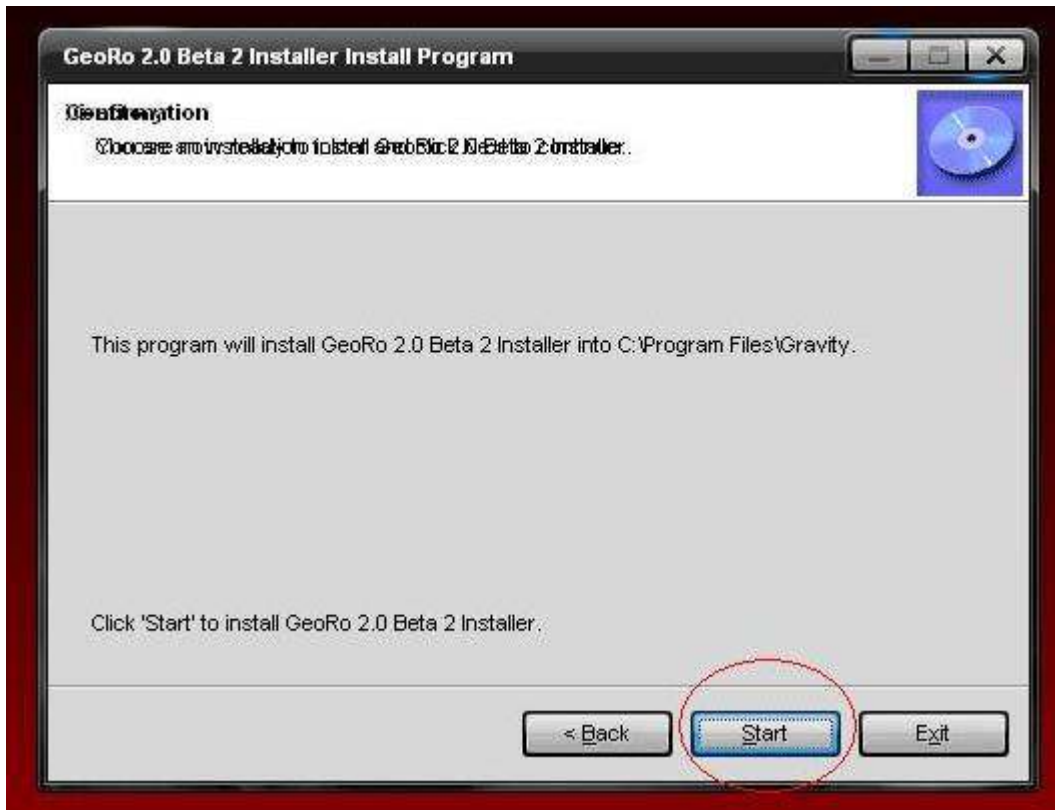


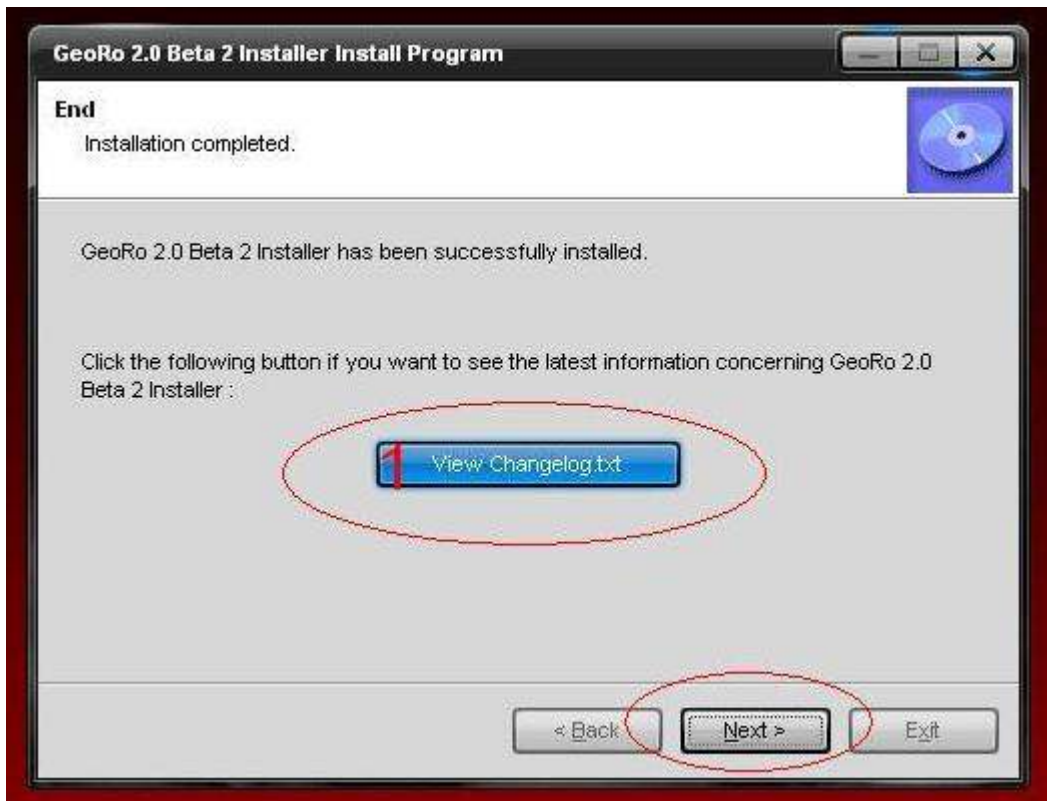
1. Please remember to change the path if you installed KRO and Sakray to a different folder (the same as the path I told you to write down while installing Kro).

If you see this window:



It means that you either typed the folder path or your folder doesn't exist. If this comes up DO NOT say yes, click on 'No' and figure out what is wrong with the path back on the previous screen in area '1'. GeoRo must be installed to the same folder as KRO and Sakray.





1. Click on this to read the Changelog.txt. This file can also be found in (assuming you installed it to the default directory) C:/Program Files/Gravity/Documentation

Click next then 'Exit' to finish the install.

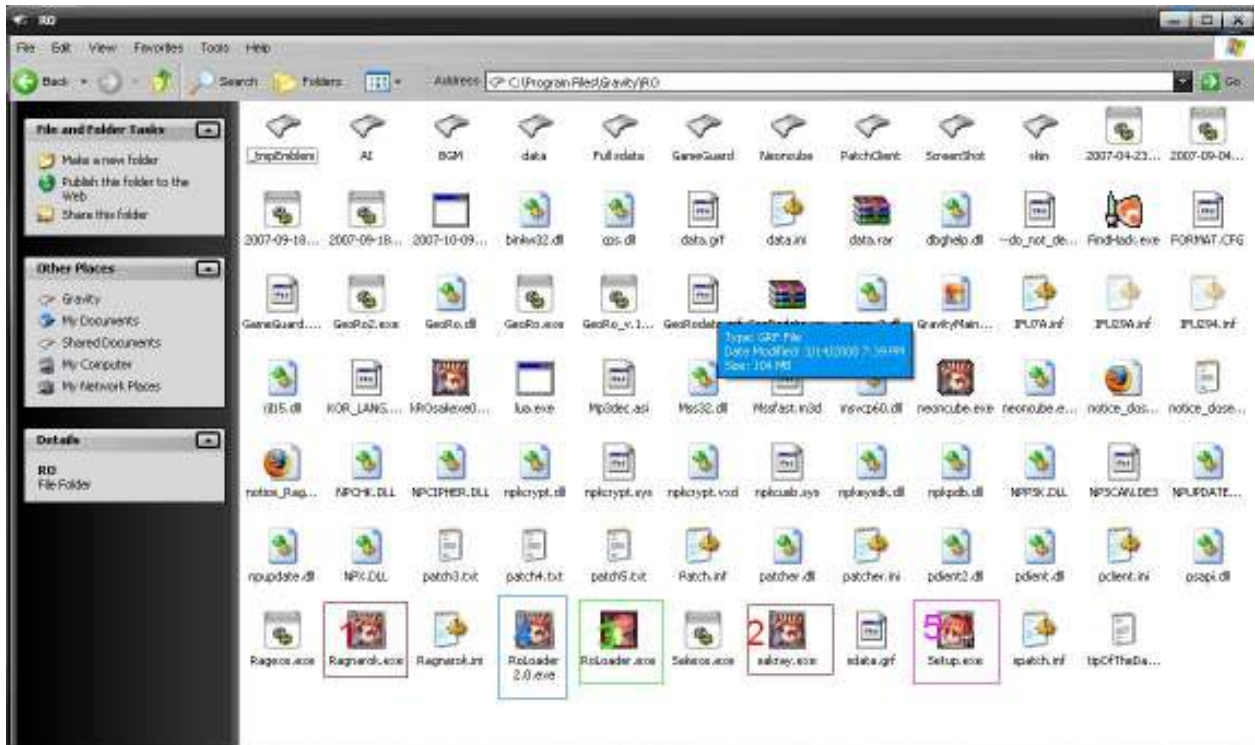
**CONGRDULATIONS**

You are almost ready to go!!

# Updating Kro and Sakray

Next comes one of the most important, and sometimes most annoying, part of this guide.

By now your RO should look something like this:



We have several ways for you to update.

We would like you to first try using the Official installers (Red 1 and 2)

Click on Ragnarok.exe and press enter.

You will see this screen come up:





This will download any updates for Kro that it finds. In the event that it fails, refer to the screen show of the forums download section to locate the KRO Patches link. Once there find the file named exactly like the update that failed to download it to your RO folder and restart the Ragnaok.exe if it still fails continue to the next step.

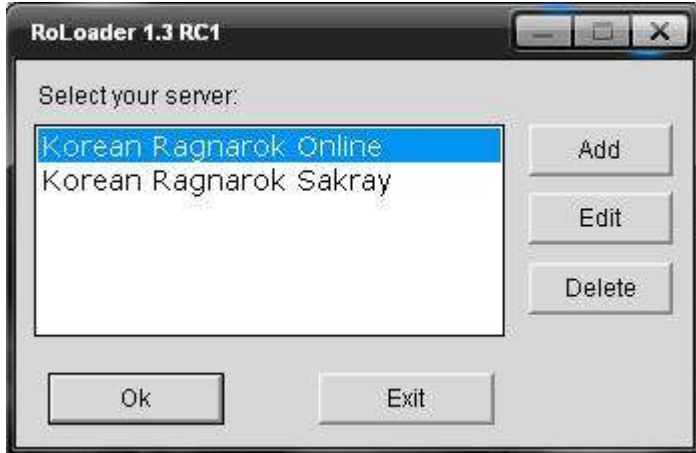
After it is done you will need to update Sakray. Select the Sakray.exe (Red #2) and press enter.

You will the screen above and it will also download patches for Sakray this time. Again, if it fails to download a patch, go to the Sakray patch site, find the update, download it and put it into your RO folder then rerun the sakray.exe.

If this still fails as well, please continue.

Ro Loader is one of our unofficial updating programs. If the above fail after downloading the updates or they give you a Windows Application Error please use Ro Loader. Select the RoLoader.exe (Green #3) and press enter.

You will see this screen come up:



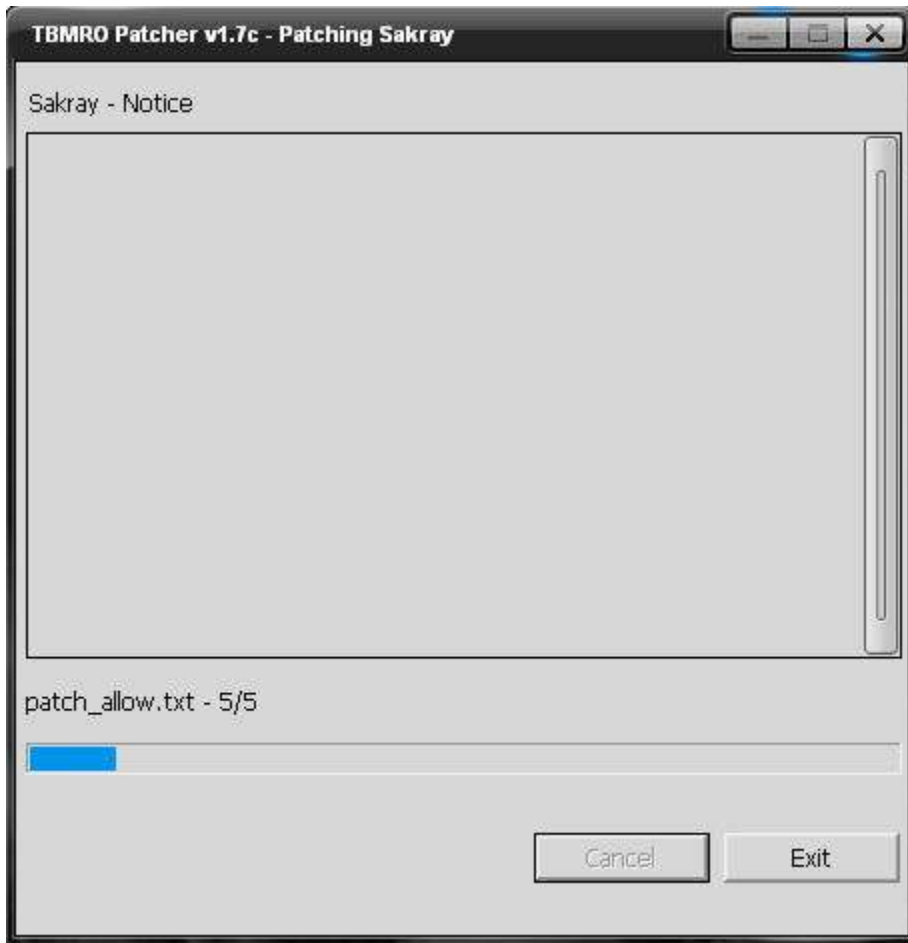
Select KRO or KRS (Korean Ragnarok Sakray) and press enter or click on 'OK'. This will load up the RoLoader updater for the chosen game. Once it is done you will need to run the one you didn't pick from this list.

If Sakray fails to update with RoLoader we have RoLoader2.0.

Please note that it ONLY updates Sakray.

Select the RoLoader2.0.exe (blue #4) and press enter.

You will see this screen:



Once it is done you may exit it.

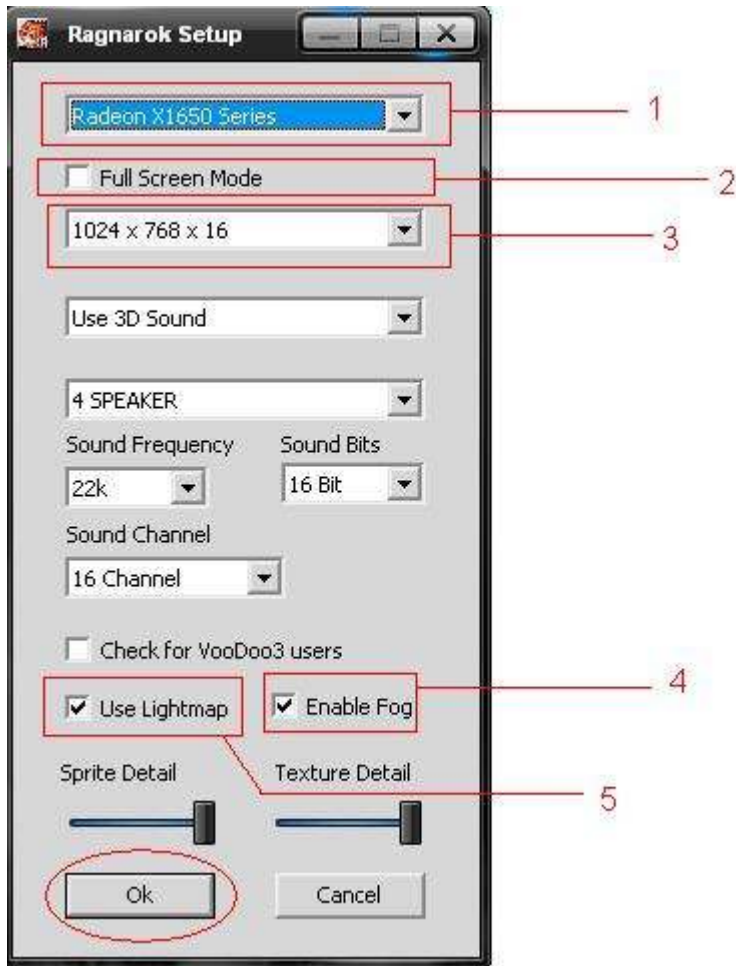
**PLEASE NOTE THAT IF ANY OR ALL OF THESE FAIL TO RETRIVE UPDATES (YOU WILL NOTICE THAT THEY DO NOT EVEN START UPDATING, THIS IS A DIFFERENT KIND OF ISSUE FROM THE INDIVIDUAL PATCH PROBLEMS) YOU WILL NEED TO REINSTALL KRO AND SAKRAY.**

Now, you are all installed and up to date. There is one more thing you must do before you can register and play.

See the Purple #5? This will set up your video configuration for RO. If you do not do this step you WILL get a "d3d error or GRF has a problem" error message.

Highlight Setup.exe (purple #5 and press enter.)

You will see this window:



1. This is where you will choose your video card. If there is nothing in this box, please click start > run > type dxdiag > click on the video tab > and make sure that the Direct Draw Acceleration and Direct 3D Acceleration ARE NOT gray. If they are please try updating your video card drivers. If that doesn't work your card doesn't support advanced shading/other graphical features of RO and will not run it.
2. Check this box for Full Screen mode
3. This is for Window Mode. It lets you set the window size for RO.
4. If this is checked, after you zoom out to a certain point the map becomes fogged over
5. If checked RO will use the advanced lighting grid for maps. If its not checked there will be no shadows.

Once your done click on 'OK' and your ready to register.

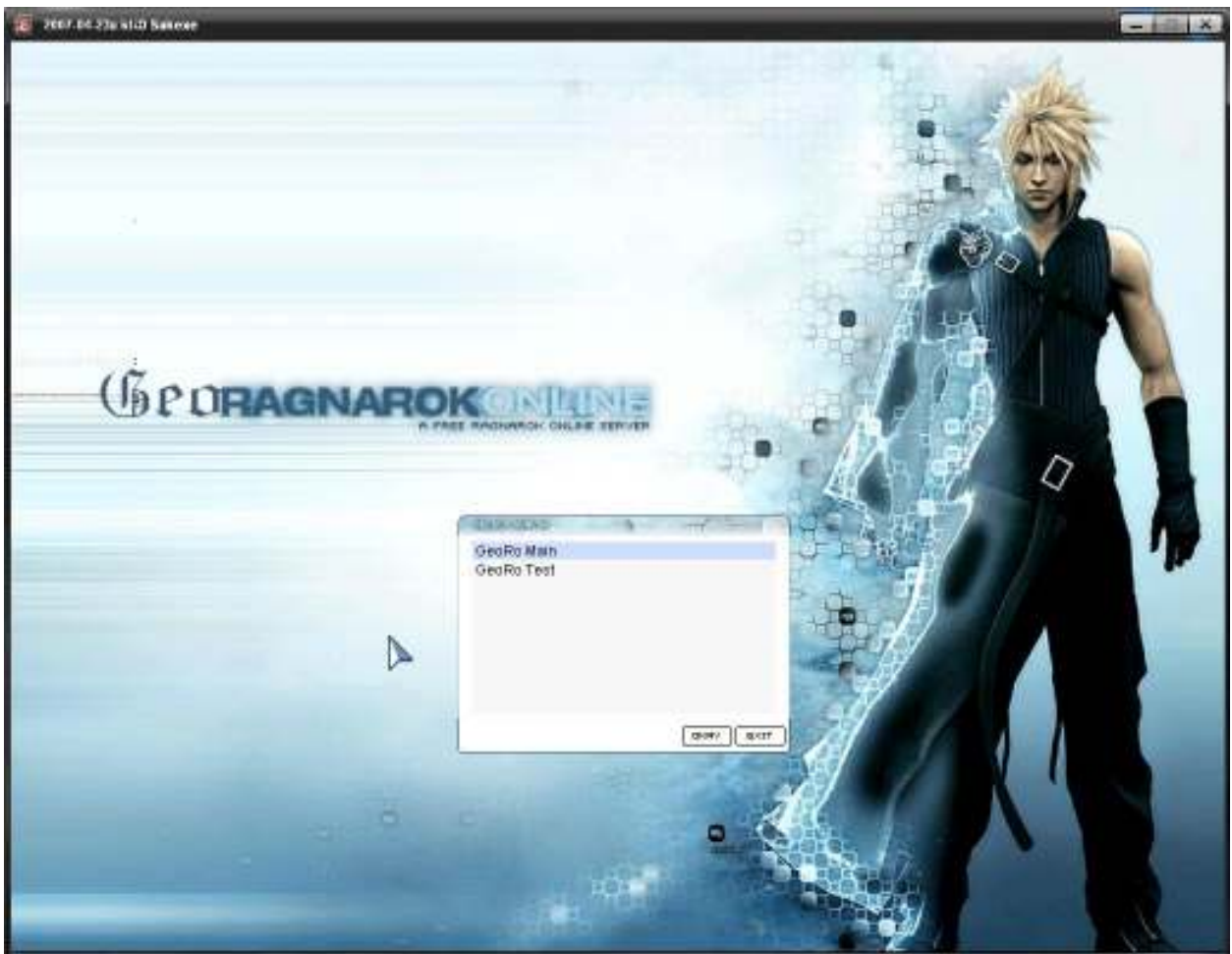
# Registration and Control Panel Features

Well, here we are, the last section of the guide. You've made it this far, good job. Now it is fairly straightforward.

We have one method currently for registration (soon to be 2).

Go back up to the picture of the RO folder and locate the GeoRo.exe and find it in your folder. Select it and press enter.

You will see this screen:



Double click on 'GeoRo Main' and you will see this screen:



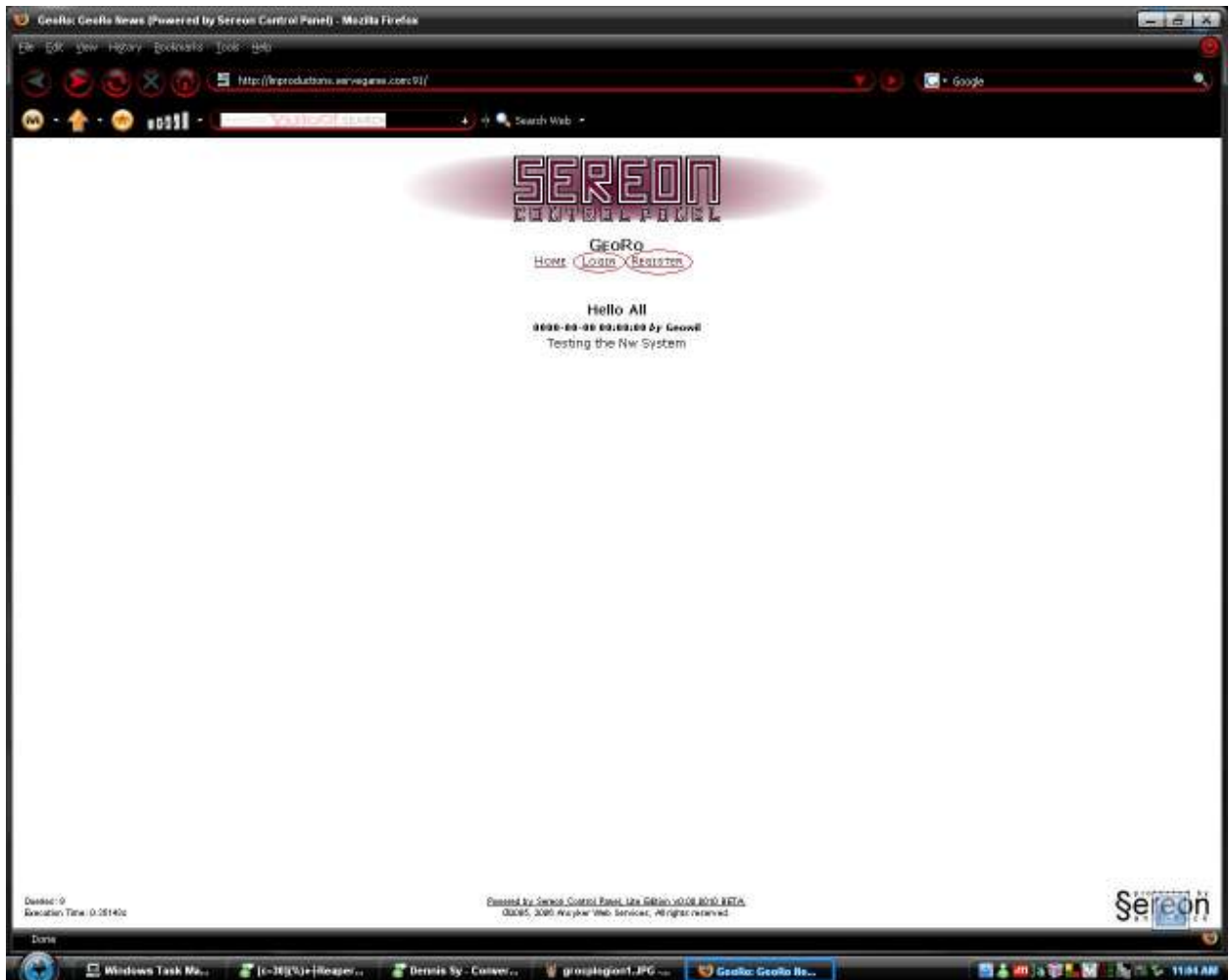
For this kind of registration all you have to do is add `_M` for a male account or `_F` for a female account to the end of your login name the first time you login (afterwards you can remove it) to create the account.

You can now continue on, make a character and login!

We also are working on a Control Panel. It is not yet functional for the server registration but if you want to check it out, you can:

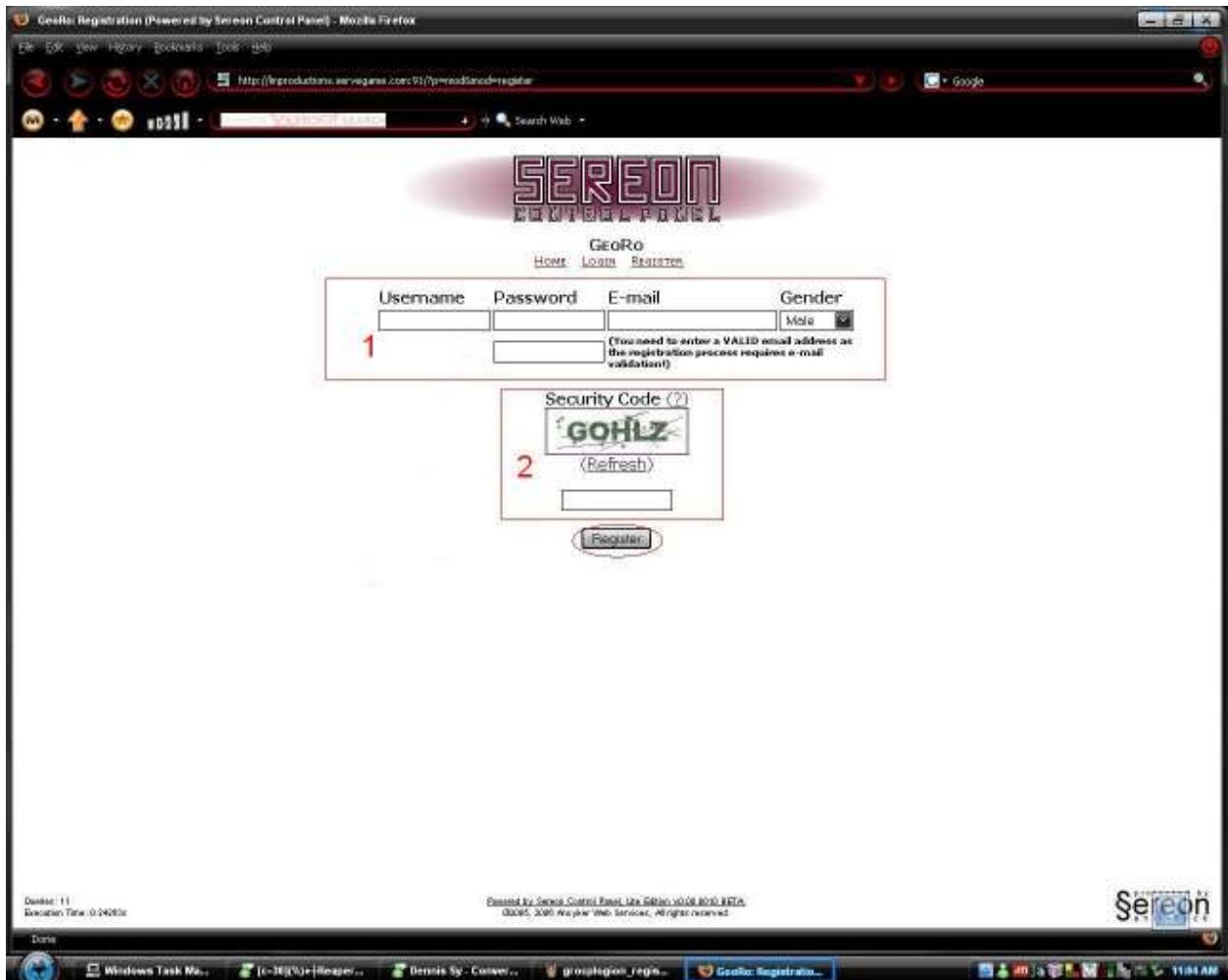
Go to this link: <http://Improductions.servegame.com:91>

And you will see this page:



If you are going to make an account on the CP, please choose register, other wise choose login and continue to the login section.

After clicking on Register you will see this page:

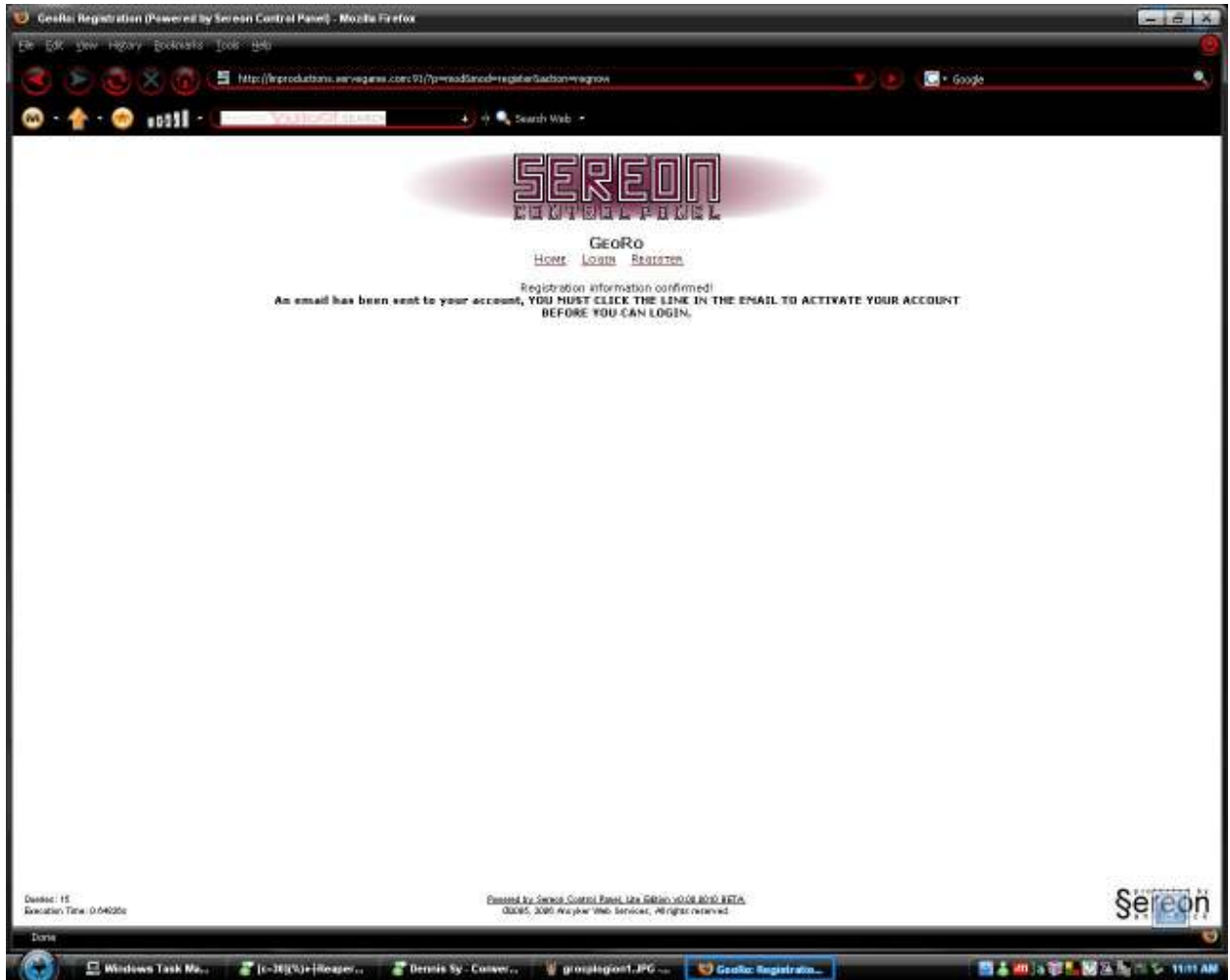


1. This is where you will enter your username, password; confirm the password, email address and the gender of the account.
2. For security purposes, all registration (and logins) will need to enter in a security code. If you cant see the code (shows as a red X or a small image that is broken in half) click on the '(?)' and follow the instructions.

After you enter the info click on register.

This screen, shall you see:





At this point I will manually send you your activation code. I will do this every day when I get home from work if there are emails waiting to go out.

Once you get the email, it will look like this:

## test activation Inbox | X

★ GeoRo Admin to me

[show details](#) 11:15 AM (2 m)

Hello missingnin,

You requested to register at our server, but I must verify you are a live person and that your email address actually exists.

Username: missingnin  
Password: XXXXXXXXXX  
Key: e1c4f02bca7212c011b9313d318f47e

To verify your account go to  
<http://lmproductions.servegame.com:91/?p=mod&mod=register&action=verify>  
and enter the information above.

If you did not request an account simply disregard this e-mail.

Thank you,  
Staff

-----  
Powered by the Sereon Control Panel

--  
Thanks for choosing/supporting GeoRo!

1. This is your login username and password and your activation key. Highlight the key and press ctrl+c then click on the link in section 2.
2. This is the link to the activation page for your account.

You will see this page:

# SEREDON

CONTROL PANEL

GeoRo

[HOME](#) [LOGIN](#) [REGISTER](#)

1	Username	<input type="text" value="missingnin"/>
	Password	<input type="password" value="*****"/>
2	Key	<input type="text" value="e1c4f02bca7212c011bf9313d318f47e"/>
<input type="button" value="Verify!"/>		

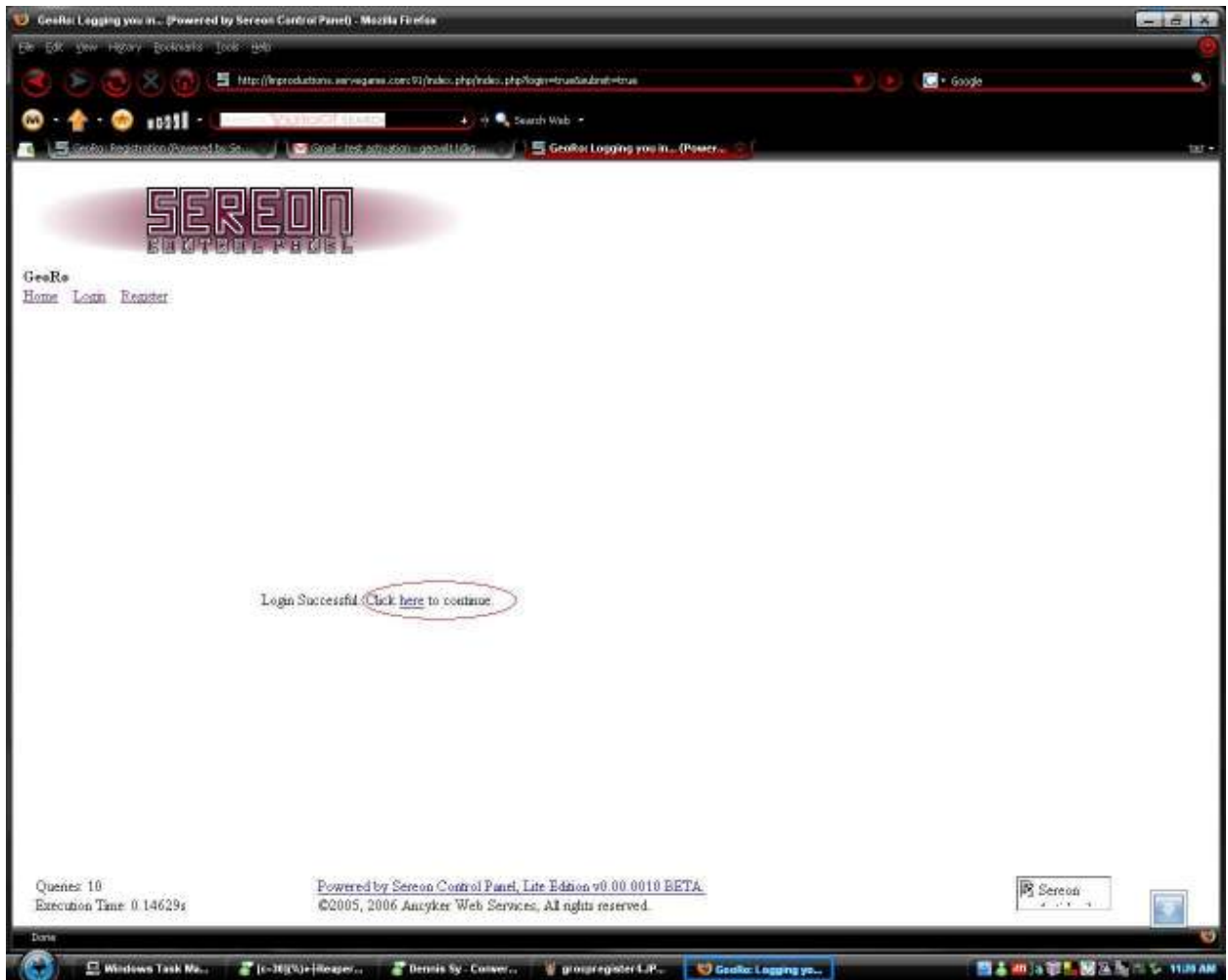
1. Input your username and password (the password is case-sensitive) and click in the box next to 'Key'.
2. Press ctrl+v once the cursor is in the box to paste the key in, and press 'Verify!'.

Next you should see this page:



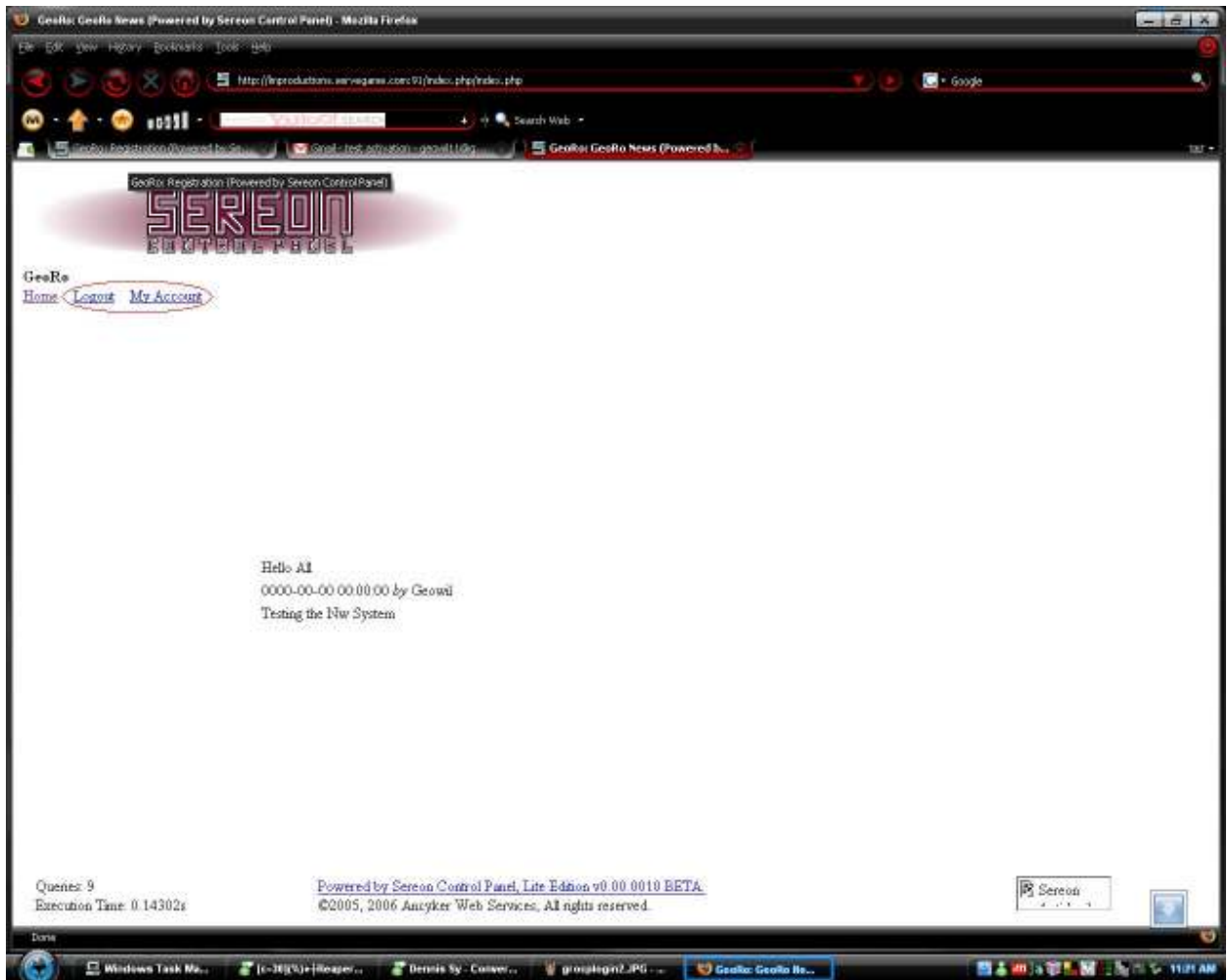
Same as before. Put in your login username and password and fill out the Security image then login.

You will be taken to this page:



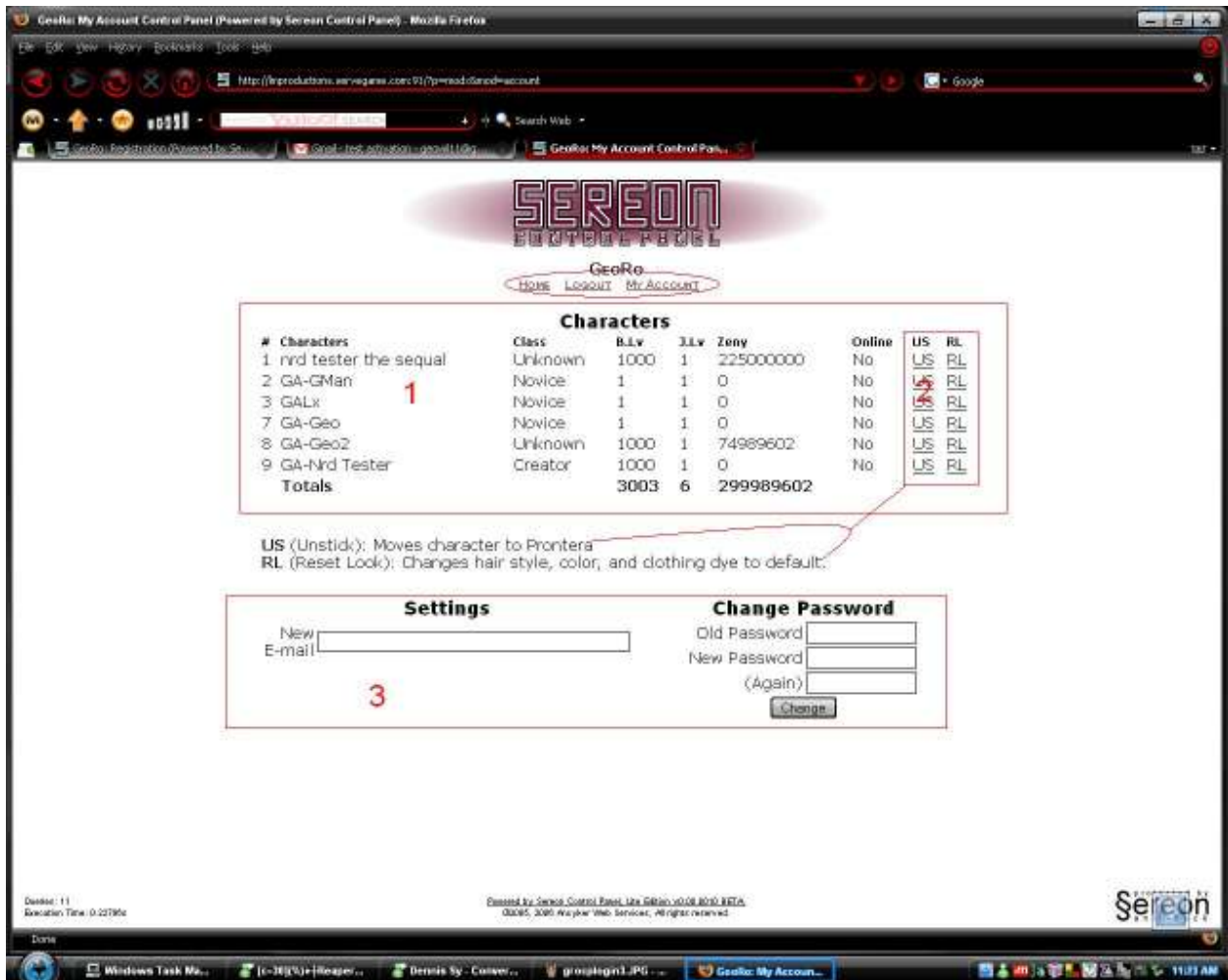
Click on 'here' to continue the login.

This will take you to this page:



Click on 'My Account' to go to your account page or 'Logout' to logout.

If you go to the My Account Page you will see something like this, probably with out any characters though:



1. This is where your char info will be displayed.
2. These are abilities that you can use as a regular player. You can move your char back to pront if it gets stuck in a map, or reset your characters look (I think it might be for either hair style/armor color or headgear) if your getting errored from it.
3. Here you can change your email address and password.

Once Sereon releases the newer public version of the Control panel we will have a lot more features.

GA-Ghoby 1000 / Gunslinger / Lv. 1 / Exp. 100 %  
000 / 20000000 | SP 429577 / 429577 | 989,033,163 Z



2007/01/24 Wednesday 23: 37: 00

[www.Ragnarok.co.kr](http://www.Ragnarok.co.kr)